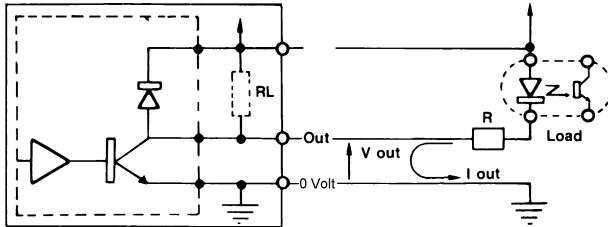


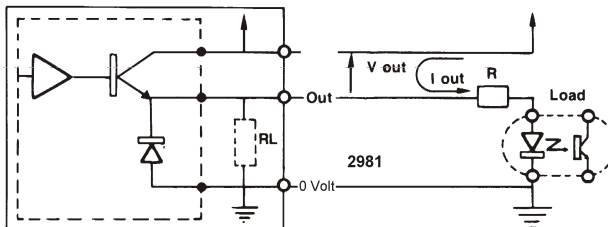
NPN (LOGICA NEGATIVA)
NPN (NEGATIVE LOGIC)



Codice di ordinazione	<i>Order code</i>
22 NPN open collector	22 NPN open collector
23 NPN con pull-up interno	23 NPN with internal pull-up

I out (SINK) 100 mA max
V out LOW 1,1 V max (a 100 mA)
 HIGH Vcc (con resistenza di Pull-up)
 Resistenza di Pull-up (RL) 5 Vcc RL = 680 Ohm
 Pull-up Resistor (RL) 11+30 Vcc RL = 4K7 Ohm

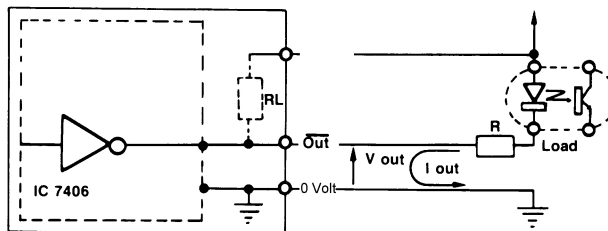
PNP (LOGICA POSITIVA)
PNP (POSITIVE LOGIC)



Codice di ordinazione	<i>Order code</i>
20 PNP open collector	20 PNP open collector
21 PNP con pull-down interno	21 PNP with internal pull-down

***I out** (SOURCE) 100 mA max
V out HIGH Vcc -1,8 V min (a 100 mA)
 LOW 0,2 V max (con resistenza Pull-down)
 Resistenza di Pull-down (RL) 5 Vcc RL = 680 Ohm
 Pull-down resistor (RL) 11+30 Vcc RL = 4K7 Ohm

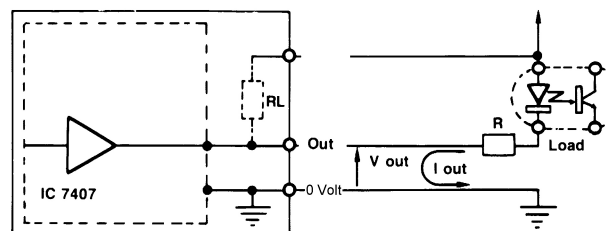
NPN - 7406 (LOGICA NEGATIVA)
NPN - 7406 (NEGATIVE LOGIC)



Codice di ordinazione	<i>Order code</i>
10 NPN open collector	10 NPN open collector
11 NPN con pull-up interno	11 NPN with internal pull-up

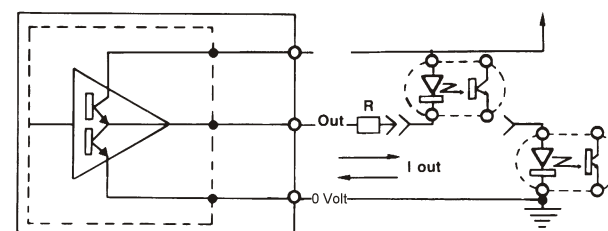
I out (SINK) 40 mA max
V out HIGH Vcc (con resistenza di Pull-up)
 LOW 0,7 V max (a 40 mA)
 Resistenza di Pull-up (RL) 5 Vcc RL = 680 Ohm
 Pull-up resistor (RL) 11+30 Vcc RL = 4K7 Ohm

NPN - 7407 (LOGICA POSITIVA)
NPN - 7407 (POSITIVE LOGIC)



Codice di ordinazione	<i>Order code</i>
12 NPN open collector	12 NPN open collector
13 NPN con pull-up interno	13 NPN with internal pull-up

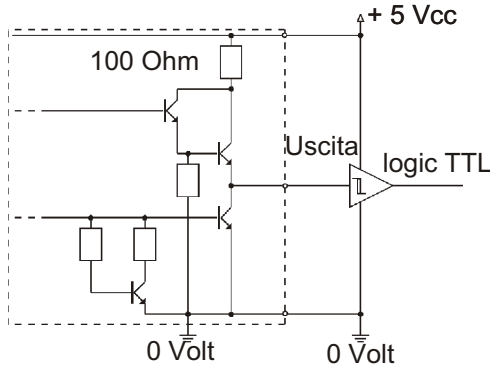
PUSH-PULL (LOGICA POSITIVA)
PUSH-PULL (POSITIVE LOGIC)



Codice di ordinazione	30	<i>Order code</i>	30
-----------------------	-----------	-------------------	-----------

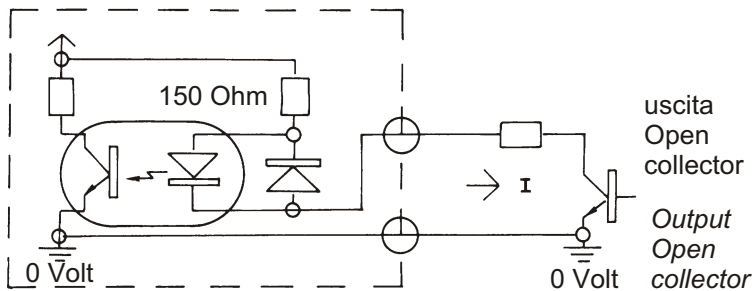
5 Vcc PP
 11+30 Vcc
I out (SINK o SOURCE) 15 mA max
V out HIGH= Vcc -1V (a 15 mA)
 LOW= 1V max (a 15 mA)

**USCITE TTL - Codice di ordinazione 00, 01, 02, 03
TTL OUTPUTS Ordering code 00, 01, 02, 03**



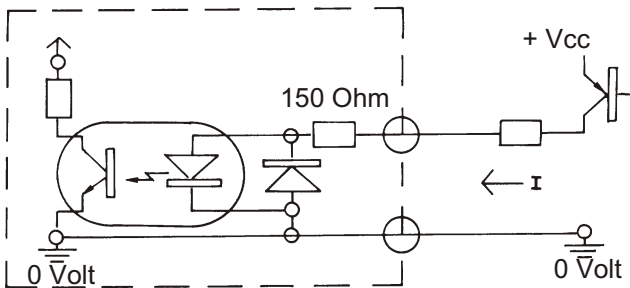
V Low (a 12 mA) = 0,25±0,5 V
V High (a 12 mA) = 2,4±3,1 V
I max = 2,5 mA

**INGRESSO NPN (per funzioni opzionali) - Codice ordinazione L - U - M - T
NPN INPUT (for optional function) - Ordering code L - U - M - T**



I max = 15 mA
I min = 6 mA
V max = 50 Vcc (solo transistori - for short time only)

**INGRESSO PNP (per funzioni opzionali) - Codice ordinazione P - W - C - X - N
PNP INPUT (for optional function) Ordering code P - W - C - X - N**



I max = 15 mA
I min = 6 mA
V max = 50 Vcc (solo transistori - for short time only)